

QMC Series Pneumatic Piston Vibrators

Features:

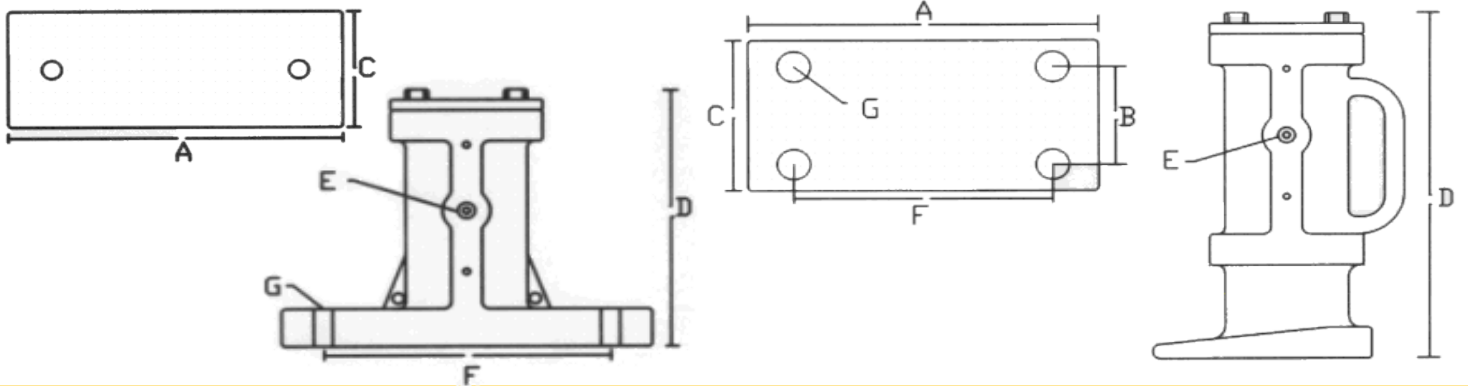
Durable ductile iron housing design

"Once Piece" Railcar Design

Roller Burnished Bore for Maximum air efficiency



Model	1 1/4" AC	1 1/4" IM	2" AC	2" IM	3" AC	3" IM	3" RR AC		3" RR IM	
AC=Air Cushion Model IM=Air Impact Model RR=Railcar Pocket Model										
Force	200	275	370	600	700	775	700		775	
VPM	3200	5400	2500	5250	1900	3600	1900		3600	
CFM	6	6	9	9	21	25	21		25	
Piston Dia	1.25"	1.25"	2.0"	2.0"	3.0"	3.0"	3.0"	3.0"	3.0"	3.0"
VPM & CFM shown @ 60psi										



Model	1 1/4" & 2" Dimensional Data						3" & 3RR			
	1 1/4" AC	1 1/4" IM	2" AC	2" IM	3" AC	3" IM	3" RR AC	3" RR IM		
A	6 1/8"	6 1/8"	9 1/8"	9 1/8"	10 5/8"	10 5/8"	NA		NA	
B	NA		NA		3 1/4"		NA		NA	
C	2 1/2"	2 1/2"	3 5/16"	3 5/16"	5"		NA		NA	
D	5 1/2"	5 1/2"	7 3/8"	7 3/8"	9 3/4"	9 3/4"	12 3/4"		12 3/4"	
E	1/4" NPT	1/4" NPT	1/4" NPT	1/4" NPT	3/8" NPT	3/8" NPT	3/8" NPT		3/8" NPT	
F	4 1/2"	4 1/2"	7 1/2"	7 1/2"	7 3/4"	7 3/4"	NA		NA	
G	9/16"	9/16"	21/32"	21/32"	1"		NA		NA	
Weight	8.5 LBS	8.5 LBS	21 LBS	21 LBS	50 LBS	50 LBS	50 LBS		50 LBS	