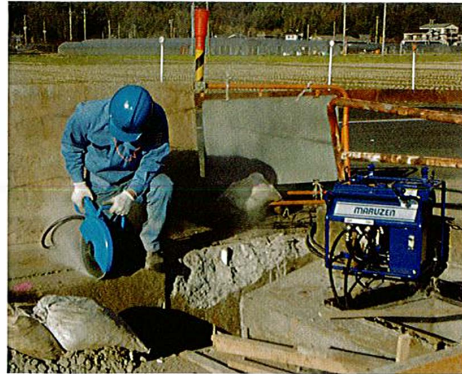


## CONCRETE CUTTER

For Cutting Concrete and Asphalt



CH130



Model	CH130
Dimensions (mm/in)	602x207x315 (24x9x13)
Weight (kg/lbs)	8 (17)
Oil flow (L (Gal)/min)	20.5 (5)
Rotation (rpm)	3200
Disc size (mm/in)	305 (12) / shaft 22mm

### FEATURES:

Powerful cutting and low noise with quality hydraulic motor.

## WATER PUMP

For Pumping Water in Construction Site



PH300



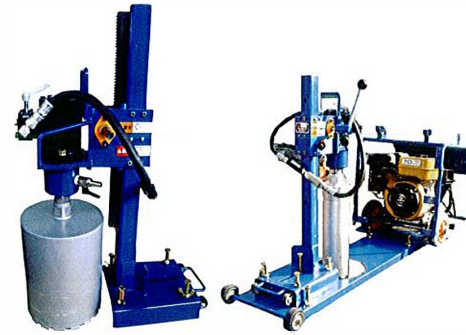
Model	PH300
Dimensions (mm/in)	430x275x190 (17x11x8)
Weight (kg/lbs)	12.4 (27)
Oil flow (L (Gal)/min)	20.5 (5)
Discharge nozzle (mm/in)	75 (3)
Max Capacity (L)	780
Max height (m/ft)	20 (65ft)

### FEATURES:

1. Durable, compact and light weight with hydraulic motor drive.
2. High performance with 3" discharged nozzle
3. Max 20m (65ft) hose extensible

## HYDRAULIC TOOLS

### CORE CUTTER



### FEATURES:

1. High torque hydraulic motor makes your drilling work for a longer time.
2. High drilling speed.
3. Possible to make large dia drilling.

Model	DH190H-2
Dimensions (LxWxH) mm/in	821x225x497/32x9x19
Weight (kg/lbs)	31.5/69
Oil Flow (L (Gal)/min)	20.5/ 5
Torque (N·m)	73.2
R.P.M.	374
Max Core Dia. (mm/ in)	204/8

### CONCRETE SAW

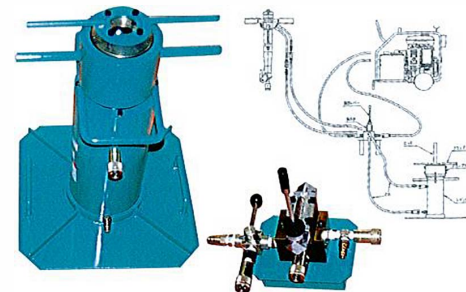


### FEATURES:

1. Light weight (7.3kg) compact and low noise concrete saw.
2. Easy to replace chain and adjust the tension of chain.
3. Possible to cut-in max 300mm concrete wall.
4. High quality and durable chain segment.

Model	MDC-300
Dimensions (LxWxH) mm/in	692x283x305/26x11x12
Weight (kg/lbs)	7.3/16
Bar Size (mm/in)	330x57.2/ 13x2-1/4
Operating Pressure (Mpa)	11.7-15.5
Oil Flow (L (Gal)/min)	20.5/5
Required Water Supply (L (Gal)/min)	9/2.37
Required Water Pressur (Mpa)	0.3/0.08
R.P.M.	500

### ROD PULLER



### FEATURES:

1. Hollow cylinder design high power puller.
2. 10t pulling power.
3. Easy operation with ball clamping system.

Model	EH-100
Dimensions (LxWxH) mm/in	403x379/16x15
Weight (kg/lbs)	33/72
Inner Hole Dia. (mm/in)	95/3-2/3
Stroke (mm/in)	175/7
Max Pulling Capacity (t)	10
Clamp Dia. (mm/in)	31 - 41/ 1-1/4-1-1/2